

ADDENDUM NO. 2

DATE: May 13, 2016
PROJECT: Menominee Public Schools Ceiling Replacement
OWNER: Menominee Area Public Schools
BID DATE: Thursday, May 19, 2016 at 10:00 a.m. (Central Time)

The following shall be incorporated into the Contract Documents dated **11 April 2016**.

GENERAL

Attendance sheet from walk thru held on May 10, 2016 is attached.

PROJECT MANUAL

ADD Section 00 43 22 – Unit Prices Form.

ADD Section 01 22 00 – Unit Prices.

ADD Section 09 65 13 – Resilient Base and Accessories.

ADD Section 09 65 19 – Resilient Tile Flooring.

Specification 27 13 23 – Communications Optical Fiber Backbone Cabling
Replace this specification in it's entirety.

Specification 27 15 00 – Communications Horizontal Cabling.

Section 2.4.A – Revise to add existing language: 4-pair Category 6A PVC.

Section 2.5.C – Eliminate this requirement.

Section 2.6.A – Add the following:

Comparable products by Hubbell, Panduit, or Belden are acceptable.

Section 2.6.B – Revise to add existing language 6A-CMR

Section 2.6.B.1 – Add the following. Comparable products by Belden or Hubbell are acceptable.

DRAWINGS

Sheet A002 – Phasing Plan

See attached revised sheet. Note phasing date revisions.

Sheet A102 – Partial Reflected Ceiling Plan Area 'A'

Ceiling installation must be coordinated with existing sprinkler heads to remain in English 110.

2/A102 – Locker Soffit Detail

Clarification: Studs are not required to extend to roof deck if adequate framing is provided to support soffit from adjacent walls.

2 & 3/A102 – Soffit Detail / Locker Soffit Detail

Clarification: 20ga metal studs are acceptable.



Sheets E107 – E117 – Low Voltage Plans

All speakers shown on plans are to be new and shall be max 4-watt, with lower wattage taps, suitable for both 70V and 25V amplifier output.

Clarification to sheets. Data cables are to be terminated with an RJ45 connector at switch relocation.

ADD Sheet A107 – Partial Flooring Plan

Provide VCT and vinyl base in locations indicated. Provide transition strips as required between VCT and adjacent existing floor finishes.

End of Addendum No. 2

DOCUMENT 00 43 22 - UNIT PRICES FORM

1.1 BID INFORMATION

- A. Bidder: _____.
- B. Project Name: Menominee Public Schools Ceiling Replacement.
- C. Project Location: Menominee, Michigan.
- D. Owner: Menominee Area Public Schools.
- E. Architect: OHM Advisors.
- F. Architect Project Number: 7301-15-0850.

1.2 BID FORM SUPPLEMENT

- A. This form is required to be attached to the Bid Form.
- B. The undersigned Bidder proposes the amounts below be added to or deducted from the Contract Sum on performance and measurement of the individual items of Work.
- C. If the unit price does not affect the Work of this Contract, the Bidder shall indicate "NOT APPLICABLE."

1.3 UNIT PRICES

- A. Unit-Price No. 1: Provide floor leveling compound as required for installation of VCT.
 - 1. _____ Dollars (\$ _____) per square feet.

1.4 SUBMISSION OF BID SUPPLEMENT

- A. Respectfully submitted this ____ day of _____, 2012.
- B. Submitted By: _____ (Insert name of bidding firm or corporation).
- C. Authorized Signature: _____ (Handwritten signature).
- D. Signed By: _____ (Type or print name).
- E. Title: _____ (Owner/Partner/President/Vice President).

END OF DOCUMENT 00 43 22

SECTION 01 22 00 - UNIT PRICES

PART 1 - GENERAL

1.1 SUMMARY

- A. Section includes administrative and procedural requirements for unit prices.

1.2 DEFINITIONS

- A. Unit price is an amount incorporated into the Agreement, applicable during the duration of the Work as a price per unit of measurement for materials, equipment, or services, or a portion of the Work, added to or deducted from the Contract Sum by appropriate modification, if the scope of Work or estimated quantities of Work required by the Contract Documents are increased or decreased.

1.3 PROCEDURES

- A. Unit prices include all necessary material, plus cost for delivery, installation, insurance, applicable taxes, overhead, and profit.
- B. Measurement and Payment: See individual Specification Sections for work that requires establishment of unit prices. Methods of measurement and payment for unit prices are specified in those Sections.
- C. Owner reserves the right to reject Contractor's measurement of work-in-place that involves use of established unit prices and to have this work measured, at Owner's expense, by an independent surveyor acceptable to Contractor.
- D. List of Unit Prices: A schedule of unit prices is included in Part 3. Specification Sections referenced in the schedule contain requirements for materials described under each unit price.

PART 2 - PRODUCTS (Not Used)

PART 3 - EXECUTION

3.1 SCHEDULE OF UNIT PRICES

- A. Unit Price No. 1 - Floor Leveling:
 - 1. Description: Provide floor leveling compound as required for installation of VCT.
 - 2. Unit of Measurement: Square feet.

END OF SECTION 01 22 00

SECTION 09 65 13 - RESILIENT BASE AND ACCESSORIES

PART 1 - GENERAL

1.1 SUMMARY

- A. Section Includes:
 - 1. Resilient base.
 - 2. Resilient molding accessories.

1.2 ACTION SUBMITTALS

- A. Product Data: For each type of product.
- B. Samples: For each exposed product and for each color and texture specified, not less than 12 inches long.

PART 2 - PRODUCTS

2.1 VINYL BASE <Insert drawing designation>

- A. Manufacturers: Subject to compliance with requirements, provide products by one of the following:
 - 1. Armstrong World Industries, Inc.
 - 2. Johnsonite; a Tarkett company.
 - 3. Roppe Corporation, USA.
- B. Product Standard: ASTM F 1861, Type TV (vinyl, thermoplastic).
 - 1. Group: I (solid, homogeneous).
 - 2. Style and Location:
 - a. Style B, Cove: Provide in areas with resilient flooring.
- C. Minimum Thickness: 0.125 inch.
- D. Height: 4 inches.
- E. Lengths: Coils in manufacturer's standard length.
- F. Outside Corners: Job formed.
- G. Inside Corners: Job formed.
- H. Colors and Patterns: As selected by Architect from full range of industry colors.

2.2 VINYL MOLDING ACCESSORY

- A. Manufacturers: Subject to compliance with requirements, provide products by one of the following:
 - 1. Armstrong World Industries, Inc.
 - 2. Johnsonite; a Tarkett company.

- B. Description: Vinyl transition strips.
- C. Profile and Dimensions: As required for transitions to adjacent surfaces. .
- D. Locations: Provide vinyl molding accessories in areas indicated.
- E. Colors and Patterns: As selected by Architect from full range of industry colors.

2.3 INSTALLATION MATERIALS

- A. Trowelable Leveling and Patching Compounds: Latex-modified, portland cement based or blended hydraulic-cement-based formulation provided or approved by resilient-product manufacturer for applications indicated.
- B. Adhesives: Water-resistant type recommended by resilient-product manufacturer for resilient products and substrate conditions indicated.

PART 3 - EXECUTION

3.1 PREPARATION

- A. Prepare substrates according to manufacturer's written instructions to ensure adhesion of resilient products.
- B. Fill cracks, holes, and depressions in substrates with trowelable leveling and patching compound; remove bumps and ridges to produce a uniform and smooth substrate.
- C. Do not install resilient products until they are the same temperature as the space where they are to be installed.
- D. Immediately before installation, sweep and vacuum clean substrates to be covered by resilient products.

3.2 RESILIENT BASE INSTALLATION

- A. Comply with manufacturer's written instructions for installing resilient base.
- B. Apply resilient base to walls, columns, pilasters, casework and cabinets in toe spaces, and other permanent fixtures in rooms and areas where base is required.
- C. Install resilient base in lengths as long as practical without gaps at seams and with tops of adjacent pieces aligned.
- D. Tightly adhere resilient base to substrate throughout length of each piece, with base in continuous contact with horizontal and vertical substrates.
- E. Do not stretch resilient base during installation.
- F. On masonry surfaces or other similar irregular substrates, fill voids along top edge of resilient base with manufacturer's recommended adhesive filler material.
- G. Preformed Corners: Install preformed corners before installing straight pieces.
- H. Job-Formed Corners:

1. Outside Corners: Use straight pieces of maximum lengths possible and form with returns not less than 3 inches in length.
 - a. Form without producing discoloration (whitening) at bends.
2. Inside Corners: Use straight pieces of maximum lengths possible and form with returns not less than 3 inches in length.
 - a. Miter or cope corners to minimize open joints.

3.3 RESILIENT ACCESSORY INSTALLATION

- A. Comply with manufacturer's written instructions for installing resilient accessories.
- B. Resilient Molding Accessories: Butt to adjacent materials and tightly adhere to substrates throughout length of each piece. Install reducer strips at edges of floor covering that would otherwise be exposed.

3.4 CLEANING AND PROTECTION

- A. Comply with manufacturer's written instructions for cleaning and protecting resilient products.
- B. Cover resilient products subject to wear and foot traffic until Substantial Completion.

END OF SECTION 09 65 13

SECTION 09 65 19 - RESILIENT TILE FLOORING

PART 1 - GENERAL

1.1 SUMMARY

- A. Section Includes:
 - 1. Vinyl composition floor tile.

1.2 ACTION SUBMITTALS

- A. Product Data: For each type of product.
- B. Samples: Full-size units of each color and pattern of floor tile required.

1.3 CLOSEOUT SUBMITTALS

- A. Maintenance data.

PART 2 - PRODUCTS

2.1 PERFORMANCE REQUIREMENTS

- A. Fire-Test-Response Characteristics: For resilient tile flooring, as determined by testing identical products according to ASTM E 648 or NFPA 253 by a qualified testing agency.
 - 1. Critical Radiant Flux Classification: Class I, not less than 0.45 W/sq. cm.

2.2 VINYL COMPOSITION FLOOR TILE

- A. Manufacturers: Subject to compliance with requirements, provide products by the following:
 - 1. Armstrong World Industries, Inc.
 - 2. Mannington.
- B. Tile Standard: ASTM F 1066, Class 2, through-pattern tile.
- C. Wearing Surface: Smooth.
- D. Thickness: 0.125 inch.
- E. Size: 12 by 12 inches.
- F. Colors and Patterns: As selected by Architect from full range of industry colors.

2.3 INSTALLATION MATERIALS

- A. Trowelable Leveling and Patching Compounds: Latex-modified, portland cement based or blended hydraulic-cement-based formulation provided or approved by floor tile manufacturer for applications indicated.
- B. Adhesives: Water-resistant type recommended by floor tile and adhesive manufacturers to suit floor tile and substrate conditions indicated.

- C. Floor Polish: Provide protective, liquid floor-polish products recommended by floor tile manufacturer.

PART 3 - EXECUTION

3.1 PREPARATION

- A. Prepare substrates according to floor tile manufacturer's written instructions to ensure adhesion of resilient products.
- B. Concrete Substrates: Prepare according to ASTM F 710.
 - 1. Verify that substrates are dry and free of curing compounds, sealers, and hardeners.
 - 2. Remove substrate coatings and other substances that are incompatible with adhesives and that contain soap, wax, oil, or silicone, using mechanical methods recommended by floor tile manufacturer. Do not use solvents.
 - 3. Alkalinity and Adhesion Testing: Perform tests recommended by floor tile manufacturer. Proceed with installation only after substrate alkalinity falls within range on pH scale recommended by manufacturer in writing, but not less than 5 or more than 10 pH.
 - 4. Moisture Testing: Proceed with installation only after substrates pass testing according to floor tile manufacturer's written recommendations, but not less stringent than the following:
 - a. Perform anhydrous calcium chloride test according to ASTM F 1869. Proceed with installation only after substrates have maximum moisture-vapor-emission rate of 3 lb of water/1000 sq. ft. in 24 hours.
 - b. Perform relative humidity test using in situ probes according to ASTM F 2170. Proceed with installation only after substrates have a maximum 75 percent relative humidity level.
- C. Access Flooring Panels: Remove protective film of oil or other coating using method recommended by access flooring manufacturer.
- D. Fill cracks, holes, and depressions in substrates with trowelable leveling and patching compound; remove bumps and ridges to produce a uniform and smooth substrate.
- E. Do not install floor tiles until they are the same temperature as the space where they are to be installed.
- F. Immediately before installation, sweep and vacuum clean substrates to be covered by resilient floor tile.

3.2 FLOOR TILE INSTALLATION

- A. Comply with manufacturer's written instructions for installing floor tile.
- B. Lay out floor tiles from center marks established with principal walls, discounting minor offsets, so tiles at opposite edges of room are of equal width. Adjust as necessary to avoid using cut widths that equal less than one-half tile at perimeter.
 - 1. Lay tiles square with room axis.
- C. Match floor tiles for color and pattern by selecting tiles from cartons in the same sequence as manufactured and packaged, if so numbered. Discard broken, cracked, chipped, or deformed tiles.
 - 1. Lay tiles with grain direction alternating in adjacent tiles (basket-weave pattern).

- D. Scribe, cut, and fit floor tiles to butt neatly and tightly to vertical surfaces and permanent fixtures including built-in furniture, cabinets, pipes, outlets, and door frames.
- E. Extend floor tiles into toe spaces, door reveals, closets, and similar openings. Extend floor tiles to center of door openings.
- F. Maintain reference markers, holes, and openings that are in place or marked for future cutting by repeating on floor tiles as marked on substrates. Use chalk or other nonpermanent marking device.
- G. Install floor tiles on covers for telephone and electrical ducts, building expansion-joint covers, and similar items in finished floor areas. Maintain overall continuity of color and pattern between pieces of tile installed on covers and adjoining tiles. Tightly adhere tile edges to substrates that abut covers and to cover perimeters.
- H. Adhere floor tiles to flooring substrates using a full spread of adhesive applied to substrate to produce a completed installation without open cracks, voids, raising and puckering at joints, telegraphing of adhesive spreader marks, and other surface imperfections.

3.3 CLEANING AND PROTECTION

- A. Comply with manufacturer's written instructions for cleaning and protecting floor tile.
- B. Floor Polish: Remove soil, adhesive, and blemishes from floor tile surfaces before applying liquid floor polish.
 - 1. Apply two coat(s).
- C. Cover floor tile until Substantial Completion.

END OF SECTION 09 65 19

SECTION 27 13 23 - COMMUNICATIONS OPTICAL FIBER BACKBONE CABLING

PART 1 - GENERAL

1.1 RELATED DOCUMENTS

- A. Drawings and general provisions of the Contract, including General and Supplementary Conditions and Division 01 Specification Sections, apply to this Section.

1.2 SUMMARY

- A. Section Includes:
 1. 9/125 micrometer single-mode, inside plant optical fiber cable (OS1).
 2. Optical fiber cable connecting hardware, patch panels, and cross-connects.
 3. Cabling identification products.

1.3 DEFINITIONS

- A. BICSI: Building Industry Consulting Service International.
- B. Cross-Connect: A facility enabling the termination of cable elements and their interconnection or cross-connection.
- C. IDC: Insulation displacement connector.
- D. LAN: Local area network.
- E. RCDD: Registered Communications Distribution Designer.

1.4 OPTICAL FIBER BACKBONE CABLING DESCRIPTION

- A. Optical fiber backbone cabling system shall provide interconnections between communications equipment rooms, main terminal space, and entrance facilities in the telecommunications cabling system structure. Cabling system consists of backbone cables, intermediate and main cross-connects, mechanical terminations, and patch cords or jumpers used for backbone-to-backbone cross-connection.
- B. Backbone cabling cross-connects may be located in communications equipment rooms or at entrance facilities. Bridged taps and splitters shall not be used as part of backbone cabling.

1.5 ACTION SUBMITTALS

- A. Product Data: For each type of product.
- B. Shop Drawings:

1. System Labeling Schedules: Electronic copy of labeling schedules, in software and format selected by Owner.
2. System Labeling Schedules: Electronic copy of labeling schedules that are part of the cabling and asset identification system of the software.
3. Cabling administration drawings and printouts.
4. Wiring diagrams to show typical wiring schematics including the following:
 - a. Cross-connects.
 - b. Patch panels.
 - c. Patch cords.
5. Cross-connects and patch panels. Detail mounting assemblies, and show elevations and physical relationship between the installed components.

C. Fiber optic cable testing plan.

1.6 INFORMATIONAL SUBMITTALS

- A. Qualification Data: For Installer, installation supervisor, and field inspector.
- B. Source quality-control reports.
- C. Product Certificates: For each type of product.
- D. Field quality-control reports.

1.7 CLOSEOUT SUBMITTALS

- A. Software and Firmware Operational Documentation:
 1. Software operating and upgrade manuals.
 2. Program Software Backup: On USB media or compact disk, complete with data files.
 3. Device address list.
 4. Printout of software application and graphic screens.
- B. Maintenance Data: For optical fiber cable, splices, and connectors to include in maintenance manuals.

1.8 QUALITY ASSURANCE

- A. Installer Qualifications: Cabling Installer must have personnel certified by BICSI on staff.
 1. Installation Supervision: Installation shall be under the direct supervision of Registered Technician, who shall be present at all times when Work of this Section is performed at Project site.
 2. Testing Supervisor: Currently certified by BICSI as an RCDD to supervise on-site testing.
- B. Testing Agency Qualifications: Certified by BICSI.
 1. Testing Agency's Field Supervisor: Currently certified by BICSI as an RCDD to supervise on-site testing.

1.9 COORDINATION

- A. Coordinate layout and installation of telecommunications pathways and cabling with Owner's telecommunications and LAN equipment and service suppliers.

PART 2 - PRODUCTS

2.1 PERFORMANCE REQUIREMENTS

- A. General Performance: Backbone cabling system shall comply with transmission standards in TIA-568-C.1, when tested according to test procedures of this standard.
- B. Surface-Burning Characteristics: As determined by testing identical products according to ASTM E 84 by a qualified testing agency. Identify products with appropriate markings of applicable testing agency.
 - 1. Flame-Spread Index: 25 or less.
 - 2. Smoke-Developed Index: 50 or less.
- C. Telecommunications Pathways and Spaces: Comply with TIA-569-D.
- D. Grounding: Comply with TIA-607-B.

2.2 BACKBOARDS

- A. Backboards: Plywood, fire-retardant treated, 3/4 by 48 by 96 inches. Comply with requirements in Section 06 10 00 "Rough Carpentry" for plywood backing panels.

2.3 9/125 MICROMETER, SINGLE-MODE, INSIDE PLANT OPTICAL FIBER CABLE (OS1)

- A. Description: Single mode, 9/125-micrometer, 6 fibers, tight buffered, optical fiber cable.
- B. Maximum Attenuation: 1.0 Insert number dB/km at 1550 nm.
- C. Jacket:
 - 1. Jacket Color: Yellow.
 - 2. Cable cordage jacket, fiber, unit, and group color shall be according to TIA-598-D.
 - 3. Imprinted with fiber count, fiber type, and aggregate length at regular intervals not to exceed 40 inches.
- D. Comply with TIA-492CAA for detailed specifications.
- E. Comply with TIA-568-C.3 for performance specifications.
- F. Comply with ICEA S-83-596 for mechanical properties.
- G. Listed and labeled by an NRTL acceptable to authorities having jurisdiction as complying with UL 444, UL 1651, and NFPA 70 for the following types:

1. Plenum Rated, Nonconductive: Type OFNP, complying with NFPA 262.
2. Riser Rated, Nonconductive: Type OFNR, complying with UL 1666.
3. Riser Rated, Nonconductive: Type OFNP or Type OFNR in listed riser or plenum communications raceway.

2.4 OPTICAL FIBER CABLE HARDWARE

- A. Cross-Connects and Patch Panels: Modular panels housing multiple-numbered, duplex cable connectors.
 1. Number of Connectors per Field: One for each fiber of cable or cables assigned to field, plus spares and blank positions adequate to suit specified expansion criteria.
- B. Patch Cords: Factory-made, dual-fiber cables in 36-inch lengths.
- C. Cable Connecting Hardware:
 1. Quick-connect, simplex and duplex, Type LC connectors. Insertion loss not more than 0.25 dB.

2.5 GROUNDING

- A. Comply with TIA-607-B.

2.6 IDENTIFICATION PRODUCTS

- A. Comply with TIA-606-B and UL 969 for a system of labeling materials, including label stocks, laminating adhesives, and inks used by label printers.

2.7 SOURCE QUALITY CONTROL

- A. Testing Agency: Engage a qualified testing agency to evaluate cables.
- B. Factory test pre-terminated optical fiber cable assemblies according to TIA-526-14-B and TIA-568-C.3.
- C. Cable will be considered defective if it does not pass tests and inspections.
- D. Prepare test and inspection reports.

PART 3 - EXECUTION

3.1 ENTRANCE FACILITIES

- A. Coordinate backbone cabling with the protectors and demarcation point provided by communications service provider.

3.2 WIRING METHODS

- A. Wiring Method: Install cables in raceways and cable trays except within consoles, cabinets, desks, and counters. Conceal raceway and cables except in unfinished spaces.
 - 1. Install plenum cable in environmental air spaces, including plenum ceilings.
 - 2. Comply with requirements for pathways specified in Section 27 05 28 "Pathways for Communications Systems."
- B. Wiring Method: Conceal conductors and cables in accessible ceilings, walls, and floors where possible.
- C. Wiring within Enclosures: Bundle, lace, and train cables within enclosures. Connect to terminal points with no excess and without exceeding manufacturer's limitations on bending radii. Provide and use lacing bars and distribution spools.

3.3 INSTALLATION OF OPTICAL FIBER BACKBONE CABLES

- A. Comply with NECA 301.
- B. General Requirements for Cabling:
 - 1. Comply with TIA-568-C.1 and TIA-568-C.3.
 - 2. Comply with BICSI ITSIMM, Ch. 6, "Cable Termination Practices."
 - 3. Terminate all cables; no cable shall contain unterminated elements. Make terminations only at indicated outlets, terminals, cross-connects, and patch panels.
 - 4. Cables may not be spliced. Secure and support cables at intervals not exceeding 30 inches and not more than 6 inches from cabinets, boxes, fittings, outlets, racks, frames, and terminals.
 - 5. Install lacing bars to restrain cables, to prevent straining connections, and to prevent bending cables to smaller radii than minimums recommended by manufacturer.
 - 6. Bundle, lace, and train cable to terminal points without exceeding manufacturer's limitations on bending radii, but not less than radii specified in BICSI ITSIMM, "Cabling Termination Practices" Chapter. Use lacing bars and distribution spools.
 - 7. Do not install bruised, kinked, scored, deformed, or abraded cable. Do not splice cable between termination, tap, or junction points. Remove and discard cable if damaged during installation and replace it with new cable.
 - 8. Cold-Weather Installation: Bring cable to room temperature before dereeling. Heat lamps shall not be used for heating.
 - 9. In the communications equipment room, install a 10-foot-long service loop on each end of cable.
 - 10. Pulling Cable: Comply with BICSI ITSIMM, Ch. 4, "Pulling Cable." Monitor cable pull tensions.
 - 11. Cable may be terminated on connecting hardware that is rack or cabinet mounted.
- C. Open-Cable Installation:
 - 1. Install cabling with horizontal and vertical cable guides in telecommunications spaces with terminating hardware and interconnection equipment.
 - 2. Cable shall not be run through structural members or in contact with pipes, ducts, or other potentially damaging items.

- D. Installation of Cable Routed Exposed under Raised Floors:
 - 1. Install plenum-rated cable only.
 - 2. Install cabling after the flooring system has been installed in raised floor areas.
 - 3. Coil cable 6 feet long not less than 12 inches in diameter below each feed point.
- E. Group connecting hardware for cables into separate logical fields.

3.4 FIRESTOPPING

- A. Comply with requirements in Section 07 84 13 "Penetration Firestopping."
- B. Comply with TIA-569-D, Annex A, "Firestopping."
- C. Comply with BICSI TDMM, "Firestopping Systems" Article.

3.5 GROUNDING

- A. Install grounding according to BICSI TDMM, "Grounding, Bonding, and Electrical Protection" Chapter.
- B. Comply with TIA-607-B and NECA/BICSI-607.
- C. Locate grounding bus bar to minimize the length of bonding conductors. Fasten to wall allowing at least 2-inch clearance behind the grounding bus bar. Connect grounding bus bar with a minimum No. 4 AWG grounding electrode conductor from grounding bus bar to suitable electrical building ground.
- D. Bond metallic equipment to the grounding bus bar, using not smaller than No. 6 AWG equipment grounding conductor.

3.6 IDENTIFICATION

- A. Identify system components, wiring, and cabling complying with TIA-606-B. Comply with requirements for identification specified in Section 26 05 53 "Identification for Electrical Systems."
 - 1. Administration Class: Class 2.
 - 2. Color-code cross-connect fields and apply colors to voice and data service backboards, connections, covers, and labels.
- B. Comply with requirements in other specifications for painting backboards. For fire-resistant plywood, do not paint over manufacturer's label.
- C. Paint and label colors for equipment identification shall comply with TIA-606-B for Class 2 level of administration.
- D. Cable and Wire Identification:

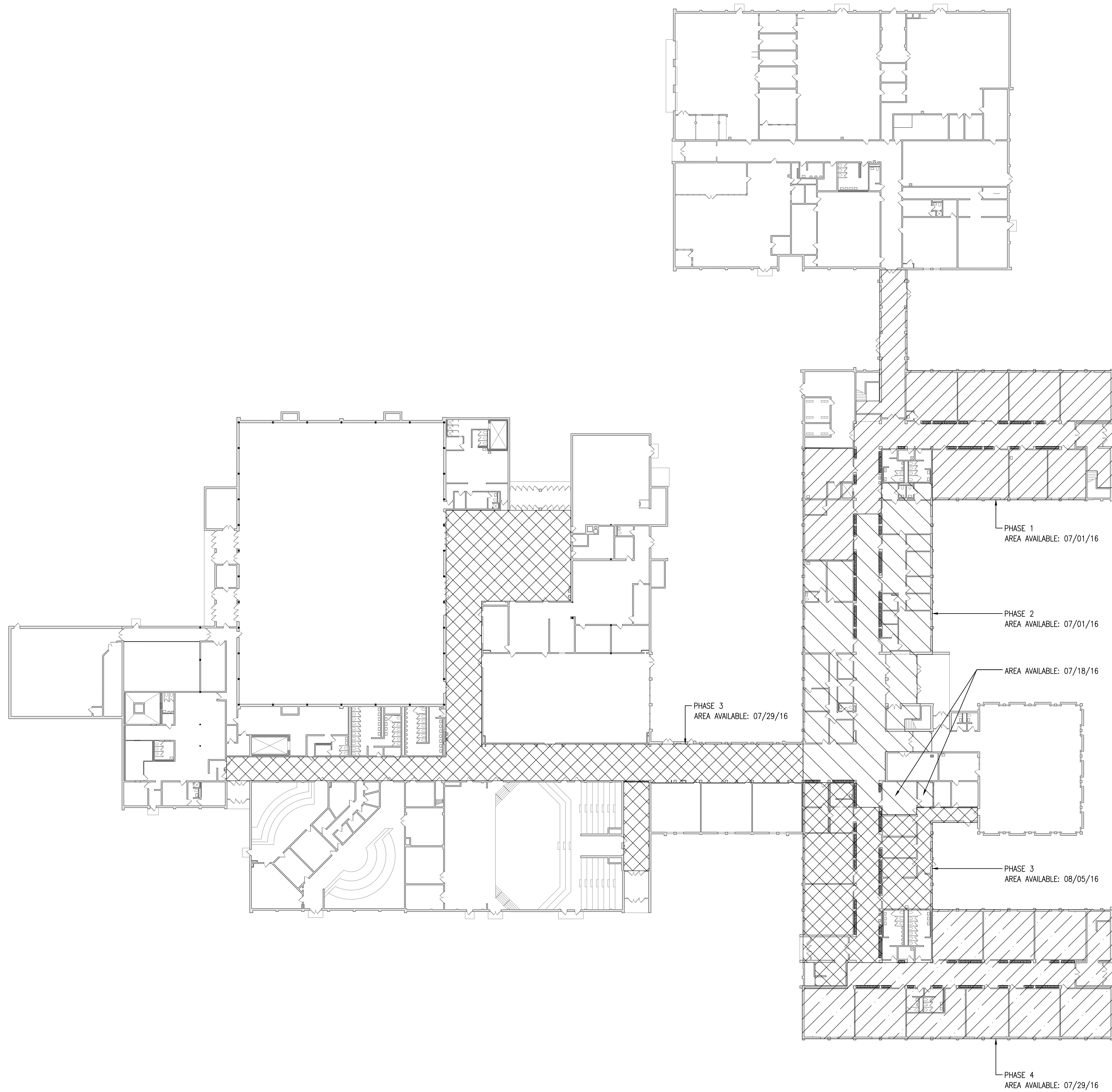
1. Label each cable within 4 inches of each termination and tap, where it is accessible in a cabinet or junction or outlet box, and elsewhere as indicated.
 2. Each wire connected to building-mounted devices is not required to be numbered at device if color of wire is consistent with associated wire connected and numbered within panel or cabinet.
 3. Exposed Cables and Cables in Cable Trays and Wire Troughs: Label each cable at intervals not exceeding 15 feet.
 4. Label each unit and field within distribution racks and frames.
 5. Identification within Connector Fields in Equipment Rooms and Wiring Closets: Label each connector and each discrete unit of cable-terminating and connecting hardware. Where similar jacks and plugs are used for both voice and data communication cabling, use a different color for jacks and plugs of each service.
- E. Labels shall be preprinted or computer-printed type with printing area and font color that contrasts with cable jacket color but still complies with requirements in TIA 606-B, for the following:
1. Cables use flexible vinyl or polyester that flexes as cables are bent.

3.7 FIELD QUALITY CONTROL

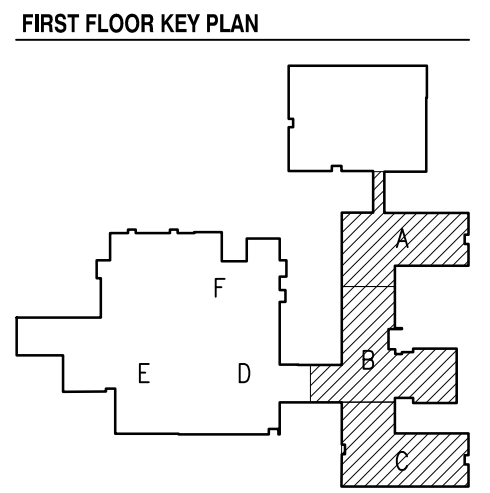
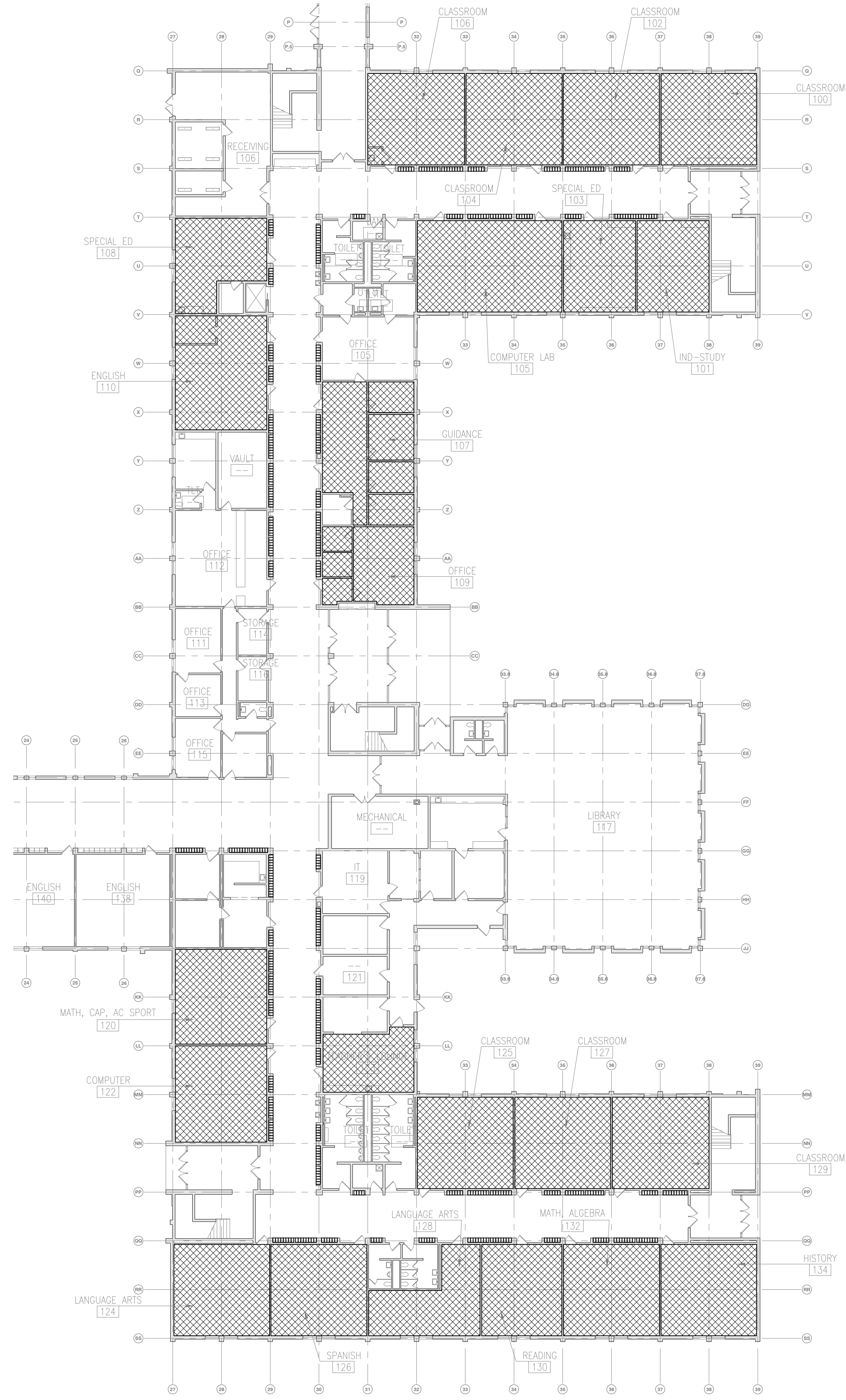
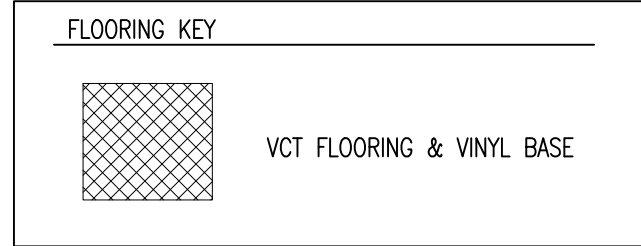
- A. Testing Agency: Owner will engage a qualified testing agency to perform tests and inspections.
- B. Testing Agency: Engage a qualified testing agency to perform tests and inspections.
- C. Manufacturer's Field Service: Engage a factory-authorized service representative to test and inspect components, assemblies, and equipment installations, including connections.
- D. Perform tests and inspections.
- E. Tests and Inspections:
 1. Visually inspect optical fiber jacket materials for NRTL certification markings. Inspect cabling terminations in communications equipment rooms for compliance with color-coding for pin assignments, and inspect cabling connections for compliance with TIA-568-C.1.
 2. Visually inspect cable placement, cable termination, grounding and bonding, equipment and patch cords, and labeling of all components.
 3. Optical Fiber Cable Tests:
 - a. Test instruments shall meet or exceed applicable requirements in TIA-568-C.1. Use only test cords and adapters that are qualified by test equipment manufacturer for channel or link test configuration.
 - b. Link End-to-End Attenuation Tests:
 - 1) Horizontal and multimode backbone link measurements: Test at 850 or 1300 nm in one direction according to TIA-526-14-B, Method B, One Reference Jumper.
 - 2) Attenuation test results for backbone links shall be less than 2.0 dB. Attenuation test results shall be less than those calculated according to equation in TIA-568-C.1.

- F. Data for each measurement shall be documented. Data for submittals shall be printed in a summary report that is formatted similar to Table 10.1 in BICSI TDMM, or transferred from the instrument to the computer, saved as text files, and printed and submitted.
- G. Remove and replace cabling where test results indicate that it does not comply with specified requirements.
- H. End-to-end cabling will be considered defective if it does not pass tests and inspections.
- I. Prepare test and inspection reports.

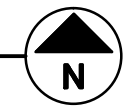
END OF SECTION 27 13 23



1 PHASING PLAN
1/32" = 1'-0"



1 AREAS 'A', 'B' & 'C' FLOORING PLAN
 3/64" = 1'-0"



SEAL

REVISIONS
 13 MAY 2016 ADDENDUM No. 2

DATE: 11 APR 2016
 PROJ NUMBER: 730150850
 ARCH: JB/ILM
 PROJ MGR: TW
 CAD: JUBL
MENOMINEE PUBLIC SCHOOLS
CEILING REPLACEMENT
 MENOMINEE, MI 49858
PARTIAL FLOORING PLAN