

ADDENDUM NO. 1

DATE: June 8, 2018

PROJECT: Marquette Area Public Schools Security Upgrades

OWNER: Marquette Area Public Schools

BID DATE: June 13, 2018

The following shall be incorporated into the Contract Documents dated **4 JUNE 2018**.

GENERAL

See attached sign in sheet from Mandatory Pre-Bid Walkthrough.

DRAWINGS

A106 – Vandenboom Partial Floor Plan

Add notes:

- Position new doors as required to allow existing corridor light to remain.
- Relocate AED cabinet and sign as required to accommodate new storefront system.
- Provide VCT at Office 106 in area of removed casework and Door 106B. Provide transition strips as required to existing carpet and terrazzo.
- Provide soffit at storefront framing for Door 106A. Soffit width to align with existing corridor wall on corridor side. Soffit to extend 6" beyond storefront framing or as required to cover ceiling demolition on Office 106 side.
- Patch and paint south wall of Office 106 to match existing.

Structural

- Incorporate new steel frame at Door 106B. See sheet AD-1/S1. Contractor shall provide temporary bracing for opening and adjacent steel lintel as required as this door is located in a bearing wall.
- Contractor shall field verify dimensions prior to ordering steel frame and provide shop drawings for review and approval prior to construction.

Electric

- Remove and reinstall light switch in storefront framing adjacent to Door 106A.
- Eliminate new light in corridor 103.
- Revise exit light in corridor 103 to be installed in new soffit immediately adjacent to storefront framing.
- Revise wiremold at countertop in Office 106.

End of Addendum No. 1

COPYRIGHT 2015 OHM ALL DRAWINGS AND WRITTEN MATERIALS APPEARING HEREIN CONSTITUTE THE ORIGINAL AND UNPUBLISHED WORK OF OHM AND THE SAME MAY NOT BE DUPLICATED, DISTRIBUTED, OR DISCLOSED WITHOUT PRIOR WRITTEN CONSENT OF OHM



WWW.OHM-ADVISORS.COM

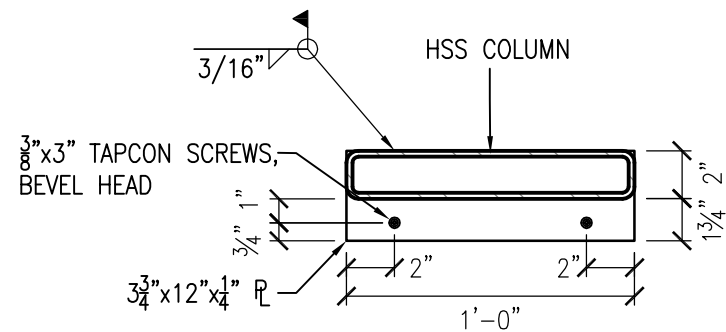
424 Hancock Street | Hancock, MI 49930-2017 | p906.482.0535 | f906.482.6453

MARQUETTE AREA PUBLIC SCHOOLS
SECURITY UPGRADES

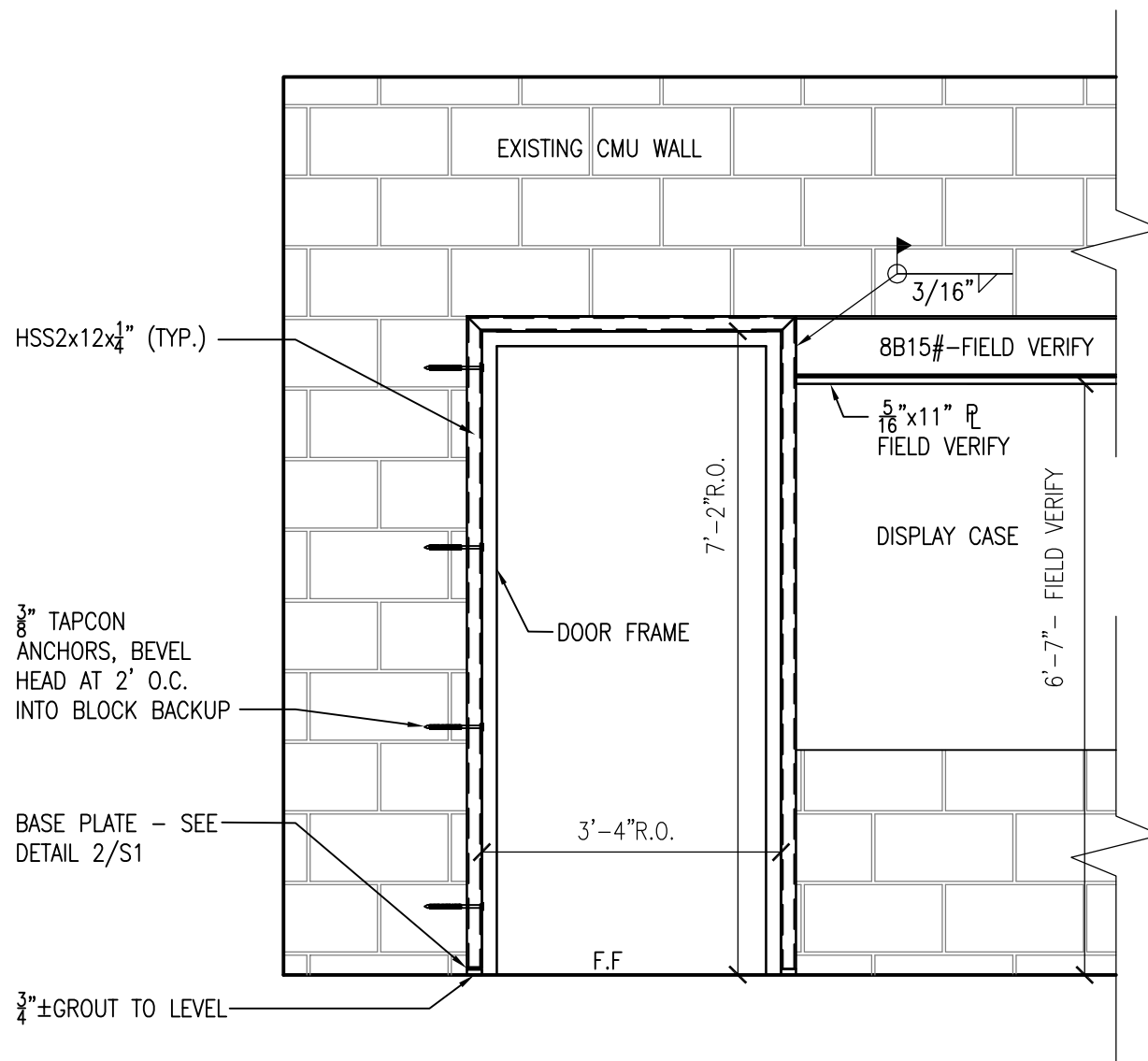
DATE
07 JUN 2018
PROJECT NO.
7391180020
PROJ MANAGER
TW
ENG / ARCH
LM/JB
DRAWN BY:
RD/JJ

SHEET NO.
S101

ADDENDUM NO. 1 6-07-2018



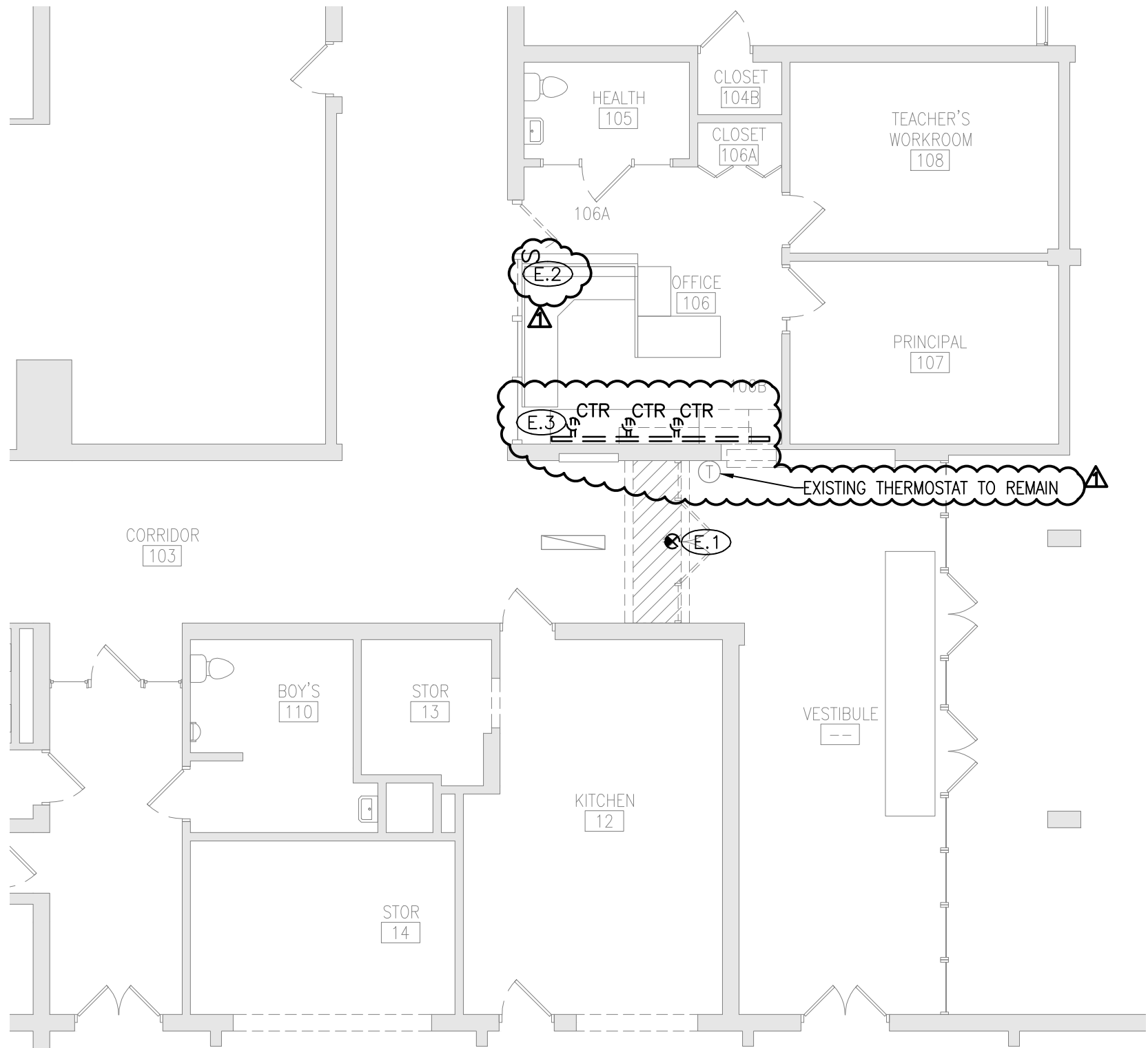
2 BASE PLATE DETAIL
1 1/2" = 1'-0"



1 STRUCTURAL WALL DETAIL
1/2" = 1'-0"

ELECTRICAL DEMOLITION KEY NOTES

- (E.1) REMOVE EXIT SIGN. SAVE CIRCUIT FOR RE-USE.
- (E.2) REMOVE LIGHT SWITCH. REMOVE CONDUIT AND CONDUCTORS BACK TO NEAREST DEVICE TO REMAIN.
- (E.3) REMOVE WIREMOLD WITH RECEPTACLES. SAVE FOR RE-USE.



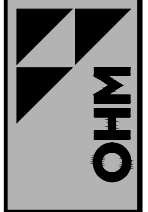
1 VANDENBOOM PARTIAL ELECTRICAL DEMOLITION PLAN
 1/8" = 1'-0"

ADDENDUM NO. 1 6-07-2018

MARQUETTE AREA PUBLIC SCHOOLS
 SECURITY UPGRADES - VANDENBOOM

DATE	04 JUN 2018
PROJECT NO.	7391180020
PROJ MANAGER	TW
ENG / ARCH	LM/JB
DRAWN BY:	RD/JJ

SHEET NO.
 E105



WWW.OHM-ADVISORS.COM
 424 Hancock Street | Hancock, MI 49930-2017 | p906.482.0535 | f906.482.6453

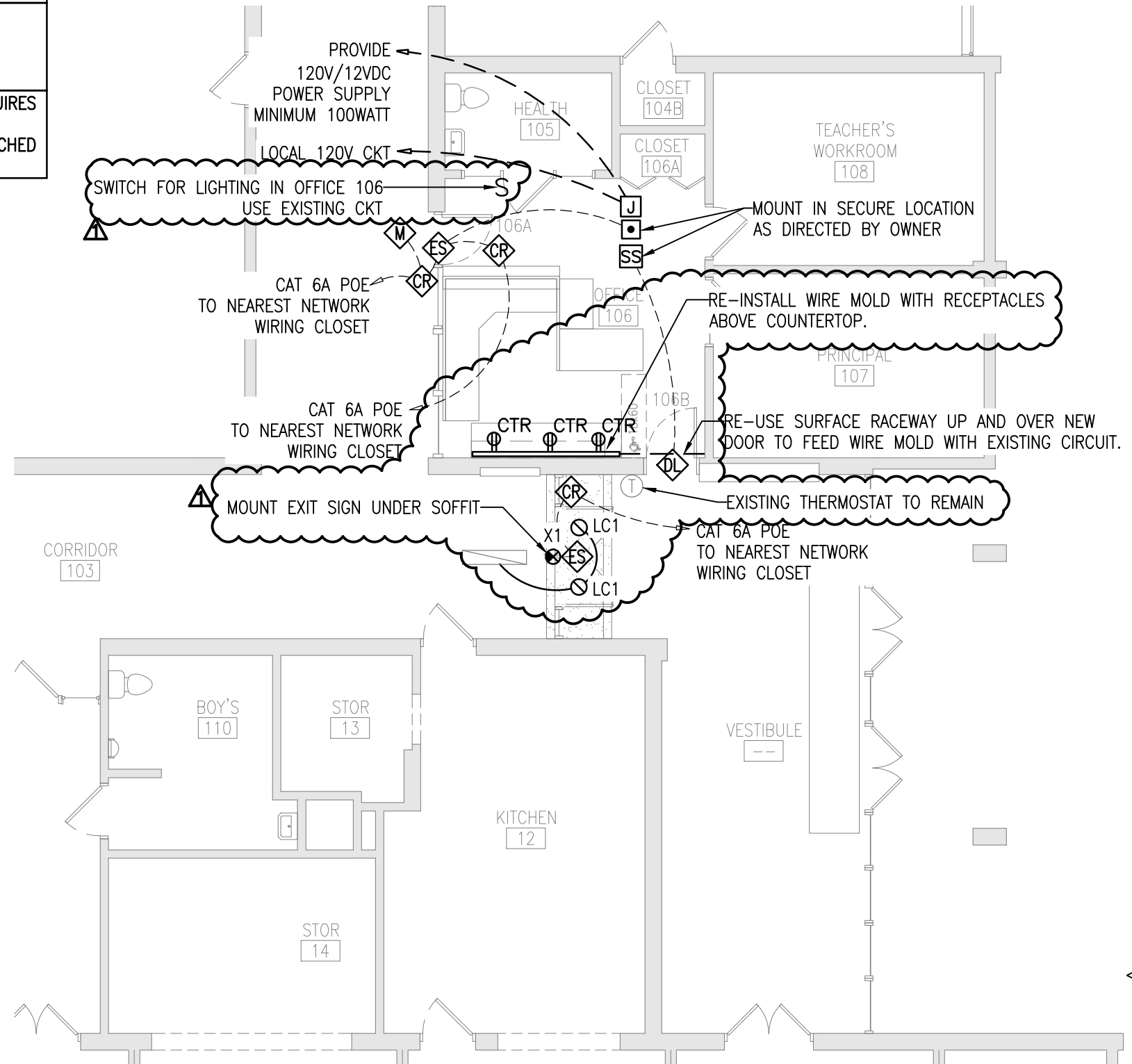
COPYRIGHT 2015 OHM ALL DRAWINGS AND WRITTEN MATERIALS APPEARING HEREIN CONSTITUTE THE ORIGINAL AND UNPUBLISHED WORK OF OHM AND THE SAME MAY NOT BE REPRODUCED, DISTRIBUTED, OR DISCLOSED WITHOUT PRIOR WRITTEN CONSENT OF OHM

NOTES:

1. DOOR LOCKS TO BE WIRED SUCH THAT APPLYING POWER LOCKS THE DOOR.

LIGHT FIXTURE SCHEDULE

TYPE	DESCRIPTION	MANUFACTURER	CATALOG #	LAMPS	BALLASTS	REMARKS
LC1	6" RECESSED CAN LIGHT	PORTFOLIO	LD6B15 D010	3500K, 80CRI	15.5 WATTS	-
		-	EU6B10208035			
		-	6LBW1LI			
X1	EXIT SIGN	LITHONIA	LQC 1 R EL N	LED	1 WATT	REQUIRES UN SWITCHED HOT
		-	-			
		-	-			



1 VANDENBOOM PARTIAL ELECTRICAL PLAN
1/8" = 1'-0"

ADDENDUM NO. 1 6-07-2018

MARQUETTE AREA PUBLIC SCHOOLS
SECURITY UPGRADES - VANDENBOOM

DATE	04 JUN 2018
PROJECT NO.	7391180020
PROJ MANAGER	TW
ENG / ARCH	LM/JB
DRAWN BY:	RD/JJ

SHEET NO.
E106

WWW.OHM-ADVISORS.COM

424 Hancock Street | Hancock, MI 49930-2017 | p906.482.0535 | f906.482.6463



COPYRIGHT 2018 OHM ALL DRAWINGS AND WRITTEN MATERIALS APPEARING HEREIN CONSTITUTE THE ORIGINAL AND UNPUBLISHED WORK OF OHM AND THE SAME MAY NOT BE REPRODUCED, DISTRIBUTED, OR DISCLOSED WITHOUT PRIOR WRITTEN CONSENT OF OHM